

# MTL4611

## SWITCH/ PROXIMITY DETECTOR INTERFACE

1-channel, with line fault detection

The MTL4611 enables a load to be controlled by a switch or proximity detector. When selected, open or short circuit conditions in the field wiring are detected by the line-fault-detect (LFD) facility and also indicated on the top of the module. Phase reversal for the channel is selected by a switch on the side of the module and output is provided by changeover relay contacts.

### SPECIFICATION

See also common specification

#### Number of channels

One

#### Inputs

Inputs conforming to BS EN60947-5-6:2001 standards for proximity detectors (NAMUR)

#### Voltage applied to sensor

7 to 9V dc from  $1k\Omega \pm 10\%$

#### Input/output characteristics

Normal phase

Outputs closed if input  $> 2.1mA$  ( $< 2k\Omega$  in input circuit)

Outputs open if input  $< 1.2mA$  ( $> 10k\Omega$  in input circuit)

Hysteresis:  $200\mu A$  ( $650\Omega$ ) nominal

#### Line fault detection (LFD) (when selected)

User-selectable via switches on the side of the unit. A line fault is indicated by an LED. The channel output relay is de-energised if an input line fault is detected.

Open-circuit alarm on if  $I_{in} < 50\mu A$

Open-circuit alarm off if  $I_{in} > 250\mu A$

Short-circuit alarm on if  $R_{in} < 100\Omega$

Short-circuit alarm off if  $R_{in} > 360\Omega$

Note: Resistors must be fitted when using the LFD facility with a contact input  
 $500\Omega$  to  $1k\Omega$  in series with switch  
 $20k\Omega$  to  $25k\Omega$  in parallel with switch

#### Output

Single pole relay with changeover contacts

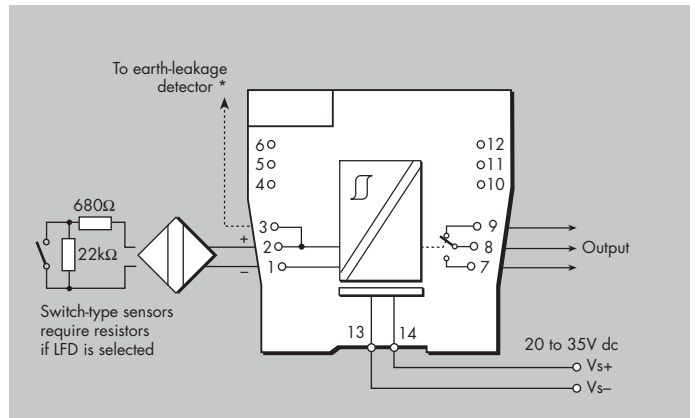
Note: reactive loads must be adequately suppressed

#### Relay characteristics

Response time: 10ms maximum

Contact rating: 10W, 0.5A, 35V dc

### MTL4611



#### LED indicators

Green: power indication

Yellow: channel status, on when output energised

Red: LFD indication, on when line fault detected

#### Maximum current consumption

25mA at 24V

#### Power dissipation within unit

0.6W at 24V

#### SIL capable

These models have been assessed for use in IEC 61508 functional safety applications. See data on MTL web site.

The given data is only intended as a product description and should not be regarded as a legal warranty of properties or guarantee. In the interest of further technical developments, we reserve the right to make design changes.



EUROPE (EMEA): +44 (0)1582 723633  
 enquiry@mtl-inst.com

THE AMERICAS: +1 800 835 7075  
 csinfo@mtl-inst.com

ASIA-PACIFIC: +65 6 487 7887  
 sales@mtlsing.com.sg

EPS4611 Rev1 201210